

Installation Planning Guide EZDP-2148 Rev D Electrical Signature Analysis

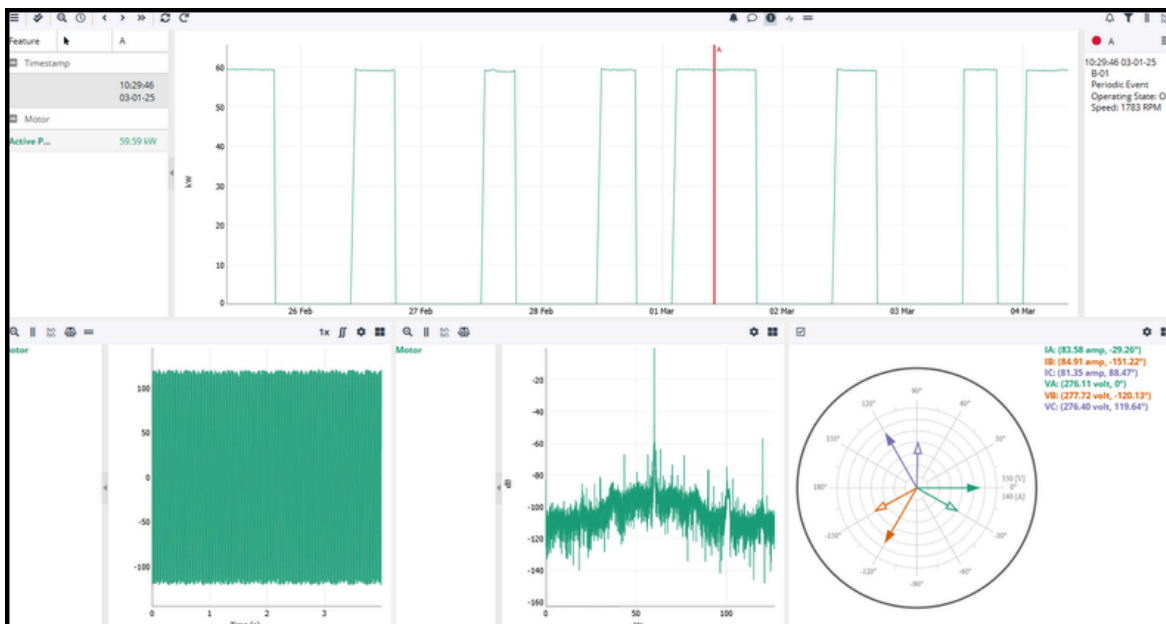


Table of Contents

1. About Cutsforth	3
1.1. Cutsforth Products	3
1.2. Cutsforth Field Services	3
1.3. Cutsforth Automation and Control Services	3
1.4. Approved Manufacturing Location	4
2. Legal Information	5
2.1. Limited Warranty	5
2.2. Copyright	6
2.3. Patents	6
3. Safety Information	7
3.1. Safety Information [English]	7
3.1.1. Safety Conventions	7
3.1.2. General Safety Instructions	8
3.2. Consignes de Sécurité [Français]	8
3.2.1. Conventions de Sécurité	9
3.2.2. Consignes de Sécurité Générales	9
4. System Overview	11
4.1. Electrical Signature Analysis Overview	11
4.2. InsightCM Features	12
5. IT System Requirements	13
5.1. Overall Architecture	13
5.2. Server Hardware Requirements	13
5.3. Networking Requirements	14
6. Physical Installation Overview	15
6.1. Equipment List	15
6.2. Installation	15
6.2.1. Conduit Layout	16
6.2.2. Conduit and Strut Channel Recommendations	18
6.2.3. Enclosure Specifications	19
6.3. Power Requirements	21
6.3.1. AC Power Supply Requirements	21
6.3.2. AC Power Specifications	21
6.4. Environmental Specifications	21
6.5. Product Certifications	21
6.6. Instrumentation	23
6.6.1. Current Sensors	24
6.6.2. Potential Measurements	25
6.7. Integration and Infrastructure	25
7. Configuring InsightCM for ESA Assets	26
7.1. Motor Nameplate Information	26
7.2. Build Asset Tree in InsightCM	27
7.3. Configure Devices in InsightCM	27
7.4. Commission Motors Using the Phasor Diagram	27
8. Glossary	29

1. About Cutsforth

Cutsforth specializes in developing innovative new technologies and services to support the power generation industry. Cutsforth's patented EASYchange® brush holder design, online truing service, InsightCM™ condition monitoring software, and patented shaft grounding and monitoring systems have been installed across the globe in generators of all sizes and in nearly every industry application, including nuclear, natural gas, coal, wind, and hydroelectric.

Cutsforth's knowledge and commitment to excellence drives our innovative solutions for the changing needs of the power industry. Whether it is a quick response to a critical situation or a new way of solving an old problem, our commitment to quality ensures that our customers receive best-in-class products and services—Cutsforth is the Power of Innovation.

Cutsforth started back in 1991 as a small company focused primarily on making replacement brush holders for generators and exciters. Today, after 30+ years in business, Cutsforth's experience and innovative designs have brought its best-in-class excitation brush holder and shaft grounding replacements and collector ring services to some of the world's largest power companies.

1.1. Cutsforth Products

- [EASYchange® Removable Brush Holders](#)
- [EASYchange® Brush Condition Monitoring](#)
- [Cutsforth Shaft Grounding Systems](#)
- [Rotor Flux Monitoring](#)
- [Electro-Magnetic Interference Monitoring](#)
- [InsightCM™ Condition Monitoring Software](#)

1.2. Cutsforth Field Services

Cutsforth provides comprehensive product installations for all product offerings as well as on-site training after the installation. We work efficiently during your outage to ensure a smooth upgrade to our innovative solutions such as Product Installations, Online Collector Ring and Commutator Truing, Spiral Groove Restoration, and Consulting and Emergency Services.

1.3. Cutsforth Automation and Control Services

Cutsforth provides comprehensive Automation and Control services which include data historian integration, InsightCM™ integration, DCS logic, engineered drawings and much more. This further complements our turnkey monitoring system installations.

1.4. Approved Manufacturing Location

CUTSFORTH

Cutsforth LLC

5160 Industrial Place #101

Ferndale, WA 98248

Customer Support: support.cutsforth.com

Website: Cutsforth.com

2. Legal Information

2.1. Limited Warranty

This document is provided 'as is' and is subject to being changed, without notice, in future editions. Cutsforth reviews this document carefully for technical accuracy; however, CUTSFORTH MAKES NO EXPRESS OR IMPLIED WARRANTY AS TO THE ACCURACY OF THE INFORMATION WITHIN THIS MANUAL AS IT RELATES TO SPECIFIC INSTALLATION. THE CUSTOMER IS RESPONSIBLE FOR VERIFYING INSTALLATION AND OPERATING CONDITIONS AT EACH INSTALLATION LOCATION AND FOR EACH GENERATOR TYPE. Cutsforth warrants that its hardware products will be free of defects in materials and workmanship that cause the product to fail to substantially conform to the applicable Cutsforth published specifications for one (1) year from the date of invoice.

For a period of ninety (90) days from the date of invoice, Cutsforth warrants that (i) its software products will perform substantially in accordance with the applicable documentation provided with the software, and (ii) the software media will be free from defects in materials and workmanship. If Cutsforth receives notice of a defect or non-conformance during the applicable warranty period, Cutsforth will, in its discretion: (i) repair or replace the affected product, or (ii) refund the fees paid for the affected product. Repaired or replaced hardware will be warranted for the remainder of the original warranty period or ninety (90) days, whichever is longer. If Cutsforth elects to repair or replace the product, Cutsforth may use new or refurbished parts or products that are equivalent to new in performance and reliability and are at least functionally equivalent to the original part or product. You must obtain an RMA number from Cutsforth before returning any product to Cutsforth. Cutsforth reserves the right to charge a fee for examining and testing hardware not covered by the Limited Warranty.

This Limited Warranty does not apply if the defect of the product resulted from improper or inadequate maintenance, installation, repair, or calibration performed by a party other than Cutsforth; unauthorized modification; improper environment; use of an improper hardware or software key; improper use or operation outside of the specification for the product; improper voltages; accident, abuse, or neglect; or a hazard such as lightning, flood, or other act of nature.

THE REMEDIES SET FORTH ABOVE ARE EXCLUSIVE AND THE CUSTOMER'S SOLE REMEDIES, AND SHALL APPLY EVEN IF SUCH REMEDIES FAIL OF THEIR ESSENTIAL PURPOSE.

WARNING REGARDING USE OF CUTSFORTH SHAFT MONITORING EQUIPMENT: CUSTOMER IS ULTIMATELY RESPONSIBLE FOR VERIFYING AND VALIDATING THE SUITABILITY AND RELIABILITY OF THE PRODUCTS WHENEVER THE PRODUCTS ARE INCORPORATED IN THEIR SYSTEM OR APPLICATION, INCLUDING THE APPROPRIATE DESIGN, PROCESS, AND SAFETY LEVEL OF SUCH SYSTEM OR APPLICATION. PRODUCTS ARE NOT DESIGNED, MANUFACTURED, OR TESTED FOR USE IN LIFE OR SAFETY CRITICAL SYSTEMS, OR ANY OTHER APPLICATION IN WHICH THE FAILURE OF THE PRODUCT OR SERVICE COULD LEAD TO DEATH, PERSONAL INJURY, SEVERE PROPERTY DAMAGE OR ENVIRONMENTAL HARM (COLLECTIVELY, "HIGH-RISK USES"). FURTHER, PRUDENT STEPS MUST BE TAKEN TO PROTECT AGAINST FAILURES, INCLUDING PROVIDING BACK-UP AND SHUT-DOWN MECHANISMS. CUTSFORTH EXPRESSLY DISCLAIMS ANY EXPRESS OR IMPLIED WARRANTY OF FITNESS OF THE PRODUCTS OR SERVICES FOR HIGH-RISK USES.

CUTSFORTH DOES NOT WARRANT, GUARANTEE, OR MAKE ANY REPRESENTATIONS REGARDING THE USE OF OR THE RESULTS OF THE USE OF THE PRODUCTS IN TERMS OF CORRECTNESS, ACCURACY, RELIABILITY, OR OTHERWISE. CUTSFORTH DOES NOT WARRANT THAT THE OPERATION OF THE PRODUCTS WILL BE UNINTERRUPTED OR ERROR FREE. INCIDENTAL AND CONSEQUENTIAL DAMAGES, INCLUDING LOSS OF USE, ARE SPECIFICALLY EXCLUDED FROM THIS WARRANTY; THE MAXIMUM VALUE OF A WARRANTY CLAIM CANNOT EXCEED THE ORIGINAL VALUE OF THE ASSEMBLY OR COMPONENT.

2.2. Copyright

Under copyright law, this publication may not be reproduced or transmitted in any form, electronic or mechanical, including photocopying, recording, storing in an information retrieval system, or translating, in whole or in part, without the prior written consent of Cutsforth. Cutsforth respects the intellectual property of others, and we ask our users to do the same. Cutsforth software is protected by copyright and other intellectual property laws. Cutsforth software is only licensed to be run on the intended hardware for which it was purchased. Reproduction of software or written materials is prohibited unless Customer has obtained a license for that express purpose.

2.3. Patents

Please send patent information requests to patents@cutsforth.com.

3. Safety Information

3.1. Safety Information [English]

Following is important safety information. For safe installation and operation of this equipment, be sure to read and understand all cautions and warnings.



Please note that if the equipment is used in a manner not specified by the manufacturer, the protection provided by the equipment may be impaired.

3.1.1. Safety Conventions



NOTE:

Additional information.



ELECTRICAL DANGER

Indicates an action or specific equipment area that can result in personal injury or death from an electrical hazard if proper precautions are not taken.



CAUTION

Indicates a hazardous situation that, if not avoided, could result in minor or moderate injury or equipment damage.



WARNING

Indicates a hazardous situation that, if not avoided, could result in death or serious injury.



ROTATING PART CAUTION

Indicates possible injury from rotating parts.



DANGER

Indicates a hazardous situation that, if not avoided, will result in death or serious injury.

3.1.2. General Safety Instructions



ELECTRICAL DANGER

Only qualified personnel who recognize shock hazards and are familiar with the safety precautions required to avoid injury should work with Cutsforth products. Among the many considerations are the following:

- Avoid contact with energized circuits.
- Avoid contact with rotating parts.
- Never install any component that appears not to be functioning in a normal manner.
- Always ensure proper installation of the holder assembly and shaft grounding rope.



ELECTRICAL DANGER

Before working on the generator, de-energize, lock out, and tag out all power sources to the generator, shaft, and accessory devices. Electric shock and death may result due to failure to heed this warning.



ROTATING PART CAUTION

High-voltage and rotating parts can cause serious or fatal injury. Installation, operation, and maintenance of this product must be performed only by qualified personnel, in accordance with all applicable safety regulations and guidelines.



LIFTING EQUIPMENT

For configurations that weigh more than 18 kg (40 lbs.), please utilize team lifting techniques to lift and move the equipment, including lifting with the legs, and avoid twisting while moving the equipment.


3.2. Consignes de Sécurité [Français]


Les informations qui suivent sont essentielles afin d'assurer la sécurité de l'utilisateur lors de l'installation et de l'opération de l'équipement. Assurez-vous de bien lire et de comprendre tous les avertissements et mises en garde qui suivent.




Veillez noter que si l'équipement est utilisé d'une manière non spécifiée par le fabricant, la protection assurée par l'équipement peut être compromise.

3.2.1. Conventions de Sécurité


 **NOTE:**
Informations supplémentaires.

 **RISQUES DE CHOC ÉLECTRIQUE**
Indique que l'action ou la partie de l'équipement concernée peut mener à des blessures par électrisation ou à la mort par électrocution si les précautions adéquates ne sont pas prises.


 **MISE EN GARDE**
Indique la présence d'une situation dangereuse qui, si elle n'est pas évitée, pourrait mener à des blessures mineures à modérées ou à des dommages matériels.

 **AVERTISSEMENT**
Indique la présence d'une situation dangereuse qui, si elle n'est pas évitée, pourrait mener à des blessures sévères ou à la mort.


 **MISE EN GARDE : PIÈCE ROTATIVE**
Indique la présence de pièces d'équipement rotatives pouvant causer des blessures.

 **DANGER**
Indique la présence d'une situation dangereuse qui, si elle n'est pas évitée, pourrait mener à des blessures sévères ou à la mort.

3.2.2. Consignes de Sécurité Générales

 **RISQUES DE CHOC ÉLECTRIQUE**
L'utilisation des produits Cutsforth n'est recommandée qu'aux professionnels qualifiés qui savent comment reconnaître la présence de risques de choc électrique ainsi que les consignes de sécurité à suivre pour éviter les blessures liées à ces risques. Lesdites consignes de sécurité incluent, sans s'y limiter :

- Éviter tout contact avec des circuits alimentés;
- Éviter tout contact avec des pièces d'équipement rotatives;
- Ne jamais installer de composante ne paraissant pas fonctionner normalement;
- Toujours s'assurer que la structure de soutien et le câble de terre de l'arbre de la génératrice sont correctement installés.

 **RISQUES DE CHOC ÉLECTRIQUE**
Avant de travailler sur la génératrice, désalimentez, cadénassez et étiquetez toutes les sources d'énergies liées à la génératrice, à l'arbre et aux appareils accessoires. L'opérateur s'expose à des risques de chocs électriques pouvant causer la mort s'il ne tient pas compte de cet avertissement.



MISE EN GARDE : PIÈCE ROTATIVE

Les pièces d'équipement rotatives et sous haute tension peuvent causer des blessures sévères ou fatales. L'installation, l'opération et la manutention de ce produit ne doivent être faites que par des professionnels qualifiés et en respectant toutes les règles et consignes de sécurité applicables.



ÉQUIPEMENT DE LEVAGE

Pour les configurations pesant plus de 18 kg (40 lb), veuillez recourir à des techniques de levage en équipe pour soulever et déplacer l'équipement — notamment en sollicitant les jambes — et évitez toute torsion du corps lors du déplacement.

4. System Overview

This manual is a guide for planning the installation of the Electrical Signature Analysis system.



This manual does not cover all details or variations in equipment, nor does it consider every possible contingency for installation, operation, or maintenance. If you have questions or concerns that are not addressed in this manual, contact Cutsforth Engineering Support.

4.1. Electrical Signature Analysis Overview

Cutsforth's Electrical Signature Analysis (ESA) is a permanently installed, online, motor monitoring system that uses voltage and current signals to identify motor faults. The ESA toolkit for InsightCM™ computes features specific to electrical data and motors beyond phasor and waveform analysis. ESA systems can monitor up to nine motors on a single voltage bus with one acquisition device. Installation near Motor Control Centers (MCCs) or switchgear minimizes cable lengths and installation costs.

Common failure modes managed with ESA:

- Rotor bar damage
- Misalignment
- Eccentricity
- Mechanical looseness
- Stator faults
- Bearing faults
- Power Quality Issues

Leverage new or existing equipment

Cutsforth's ESA system can make use of protective relay current transformers (current sensors) and potential transformers (PTs) to simplify installation and necessary signal conditioning. You can also take advantage of existing infrastructure to minimize installation and sensing costs. If current sensors and PTs are not present, you make measurements directly with properly sized instrumentation which can integrate into the ESA platform.

ESA viewers in InsightCM:

- Trend
- Waveform
- Spectrum
- High resolution spectrum

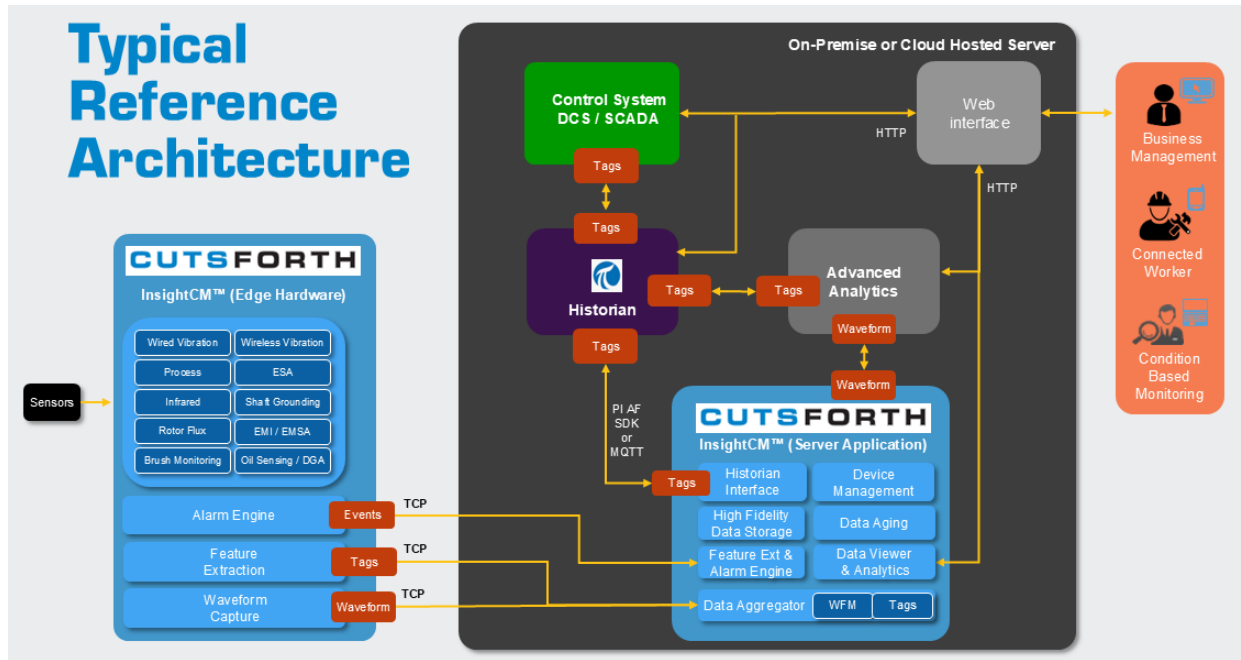
- High resolution spectrum
- Phasor diagram
- Envelope (amplitude demodulation)
- Park Clarke

4.2. InsightCM Features

InsightCM can extract a multitude of features from hardware installed in the field. The calculated feature data from InsightCM can be transmitted to plant historians for integration into advanced pattern recognition (APR) models or other advanced machine learning platforms. For more information on InsightCM features, visit the InsightCM user manual on the Cutsforth Support webpage at <https://support.cutsforth.com>.

5. IT System Requirements

5.1. Overall Architecture



5.2. Server Hardware Requirements

The following sections describe the recommended specifications for the InsightCM Server. InsightCM and SystemLink are incompatible and should be installed on separate servers.



Cutsforth recommends using solid state drives to improve disk throughput.

Systems with fewer than 10 Monitoring Devices	Systems with fewer than 50 Monitoring Devices	Systems with more than 50 Monitoring Devices
<ul style="list-style-type: none"> ▪ Windows 10 or Windows 11, 64-bit Professional ▪ 2.2 GHz, 4-core processor ▪ 16 GB RAM ▪ One physical hard drive for OS, program installation, and storing data files—At least 500 GB disk space 	<ul style="list-style-type: none"> ▪ Windows Server 2016, 2019, or 2022 ▪ 2.2 GHz, 8-core processor ▪ 16 GB RAM ▪ Two physical hard drives: <ul style="list-style-type: none"> ▪ For OS and program installation—At least 250 GB disk space ▪ For storing data files—At least 1 TB disk space 	<ul style="list-style-type: none"> ▪ Windows Server 2016, 2019, or 2022 ▪ 3 GHz, 16-core processor ▪ 32 GB RAM ▪ Two physical hard drives: <ul style="list-style-type: none"> ▪ For OS and program installation—At least 250 GB disk space ▪ For storing data files—At least 2 TB disk space

5.3. Networking Requirements

A fast or gigabit Ethernet (100 Mbps or 1000 Mbps) local area network or business network connection is required between a PC/server running InsightCM and the data acquisition devices. It is also preferable for this PC/server to be connected through the network to the site data historian for ease of gathering process data.

6. Physical Installation Overview

6.1. Equipment List

To install the ESA Monitoring system, you need the equipment listed below. Some are provided by Cutsforth, and some are provided by the electrical contractor.

Equipment	Supplied by Cutsforth	Supplied by Electrical Contractor
Current Sensor	✓	
Controller – one or two of the following (depending on number of motors being monitored): <ul style="list-style-type: none"> ▪ cRIO-9055 4-slot controller ▪ cRIO-9058 8-slot controller 	✓	
NI-9242 or NI-9244 voltage bus input card	✓	
NI-9239 Voltage Input Module for voltage output current sensor	✓	
NEMA 4X rated enclosure	✓	
Multi-paired, shielded, Tray Cable for PT and Current Sensor signal Inputs		✓
Conduit		✓
Ethernet cable for connection to server		✓
600 volt rated power cable		✓

Servicing Equipment

If fuses are part of the ESA system, they can be replaced with Eaton Bussman KTK-1 fuse or equivalent 1A, 600V, fast-acting cartridge style fuse.

6.2. Installation

This section provides step-by-step instructions for installing the ESA Monitoring System enclosure.

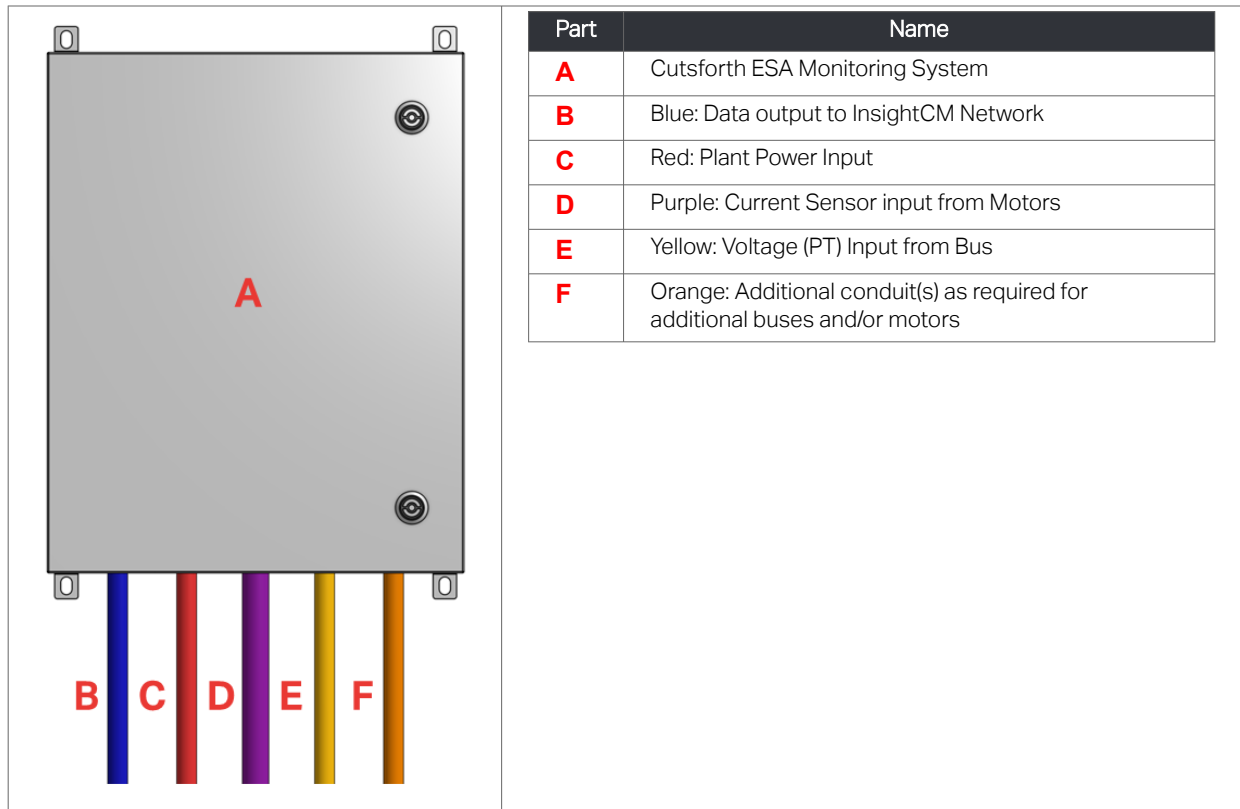
1. Mount the ESA System enclosure at the planned location.
2. Install the conduit between the ESA Monitoring System and each voltage bus pickup point.
3. Install the conduit between the ESA Monitoring System and each current sensor pickup point. Current sensor cables may be combined in conduit as long as it is appropriately sized. Current sensor cables should not be combined with PT cables.

4. Install the conduit for 120VAC power. Minimum circuit size: 20A 120VAC power supply free of non-linear loads. Consider a circuit with isolated ground.
5. Install the conduit and wire for data connection. Cutsforth recommends Cat6a or fiber connection (media converter required).
6. Connect protective earth conductor per local electrical codes.
7. Install wire for 120–240VAC supply per local electrical codes.
8. If required by local electrical codes, install an external switch or circuit breaker near the equipment. Ensure equipment is positioned so that it will not be difficult to operate the external disconnecting device.

6.2.1. Conduit Layout

Color on Diagram	Conduit Run Description	Conduit Trade Size*	Wire Description	Purpose	Max. Cable Length	Wire Supplied By
Blue	ESA Enclosure to InsightCM Server	3/4 in (2 cm)	Cat6a Cable or Fiber	Data to InsightCM Server	330 ft (100 m)	Plant Electrical Contractor
Red	Plant Power to ESA Enclosure	3/4 in (2 cm)	120VAC Power (20A dedicated circuit – preferably with isolated ground)	Power for the Monitoring System	N/A	Plant Electrical Contractor
Purple	Current Sensor Voltage Output to ESA Enclosure	Size dependent on cable type used and quantity. Follow NEC and site electrical specification for proper sizing.	Shielded Twisted Pair	Current Sensor Signal In	100 ft	Plant Electrical Contractor
Yellow	Voltage Bus Signals to ESA Enclosure	3/4 in (2 cm)	Shielded Twisted Pair	Voltage Bus Signal In	100 ft	Plant Electrical Contractor

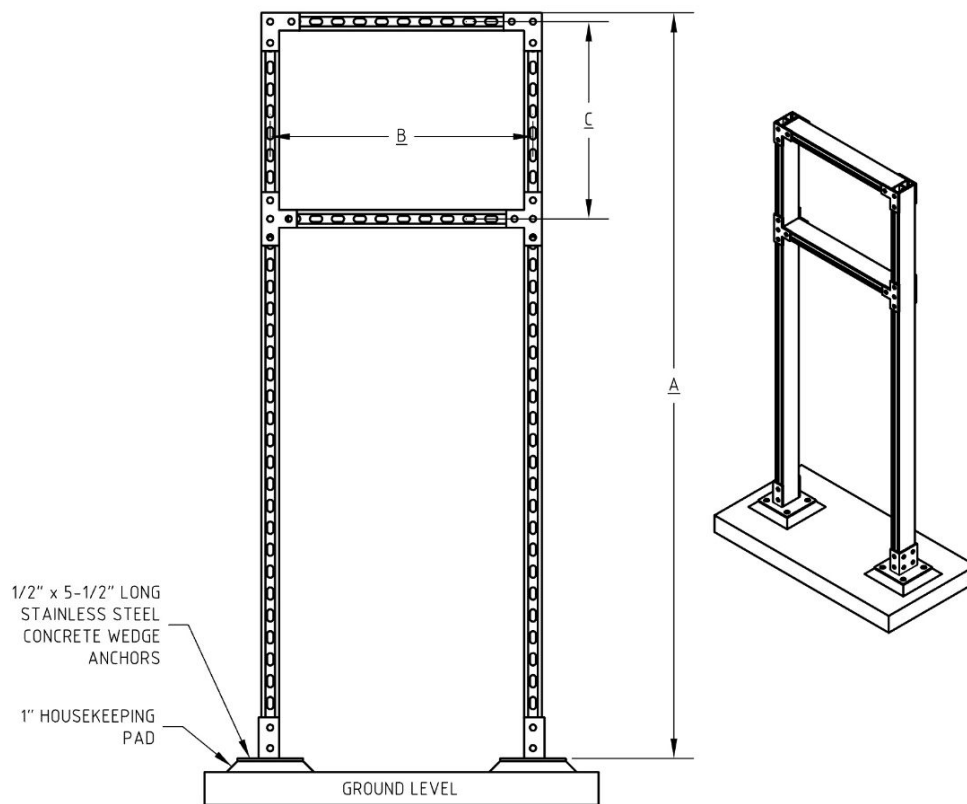
*Enclosures do not come with conduit holes pre-drilled. Conduit sizing and hole placement is customizable.



6.2.2. Conduit and Strut Channel Recommendations

Component	Standard Recommendation	Recommendation for High-Corrosion Environments
Conduit type	Galvanized rigid metal conduit (RMC)	Rigid Aluminum Conduit (RAC)
Conduit fittings type	Malleable, NEMA 4X rated or greater	Aluminum
Strut channel type	Hot dipped galvanized, back-to-back	316 Stainless steel
Mounting hardware	316 Stainless steel	316 Stainless steel
Liquid flexible metallic conduit	Type HCX	Type HCX

6.2.2.1. Recommended Strut Rack Design



A in. (mm)	B in. (mm)	C in. (mm)
68 (1730)	24 (610)	Refer to enclosure mounting feet dimensions

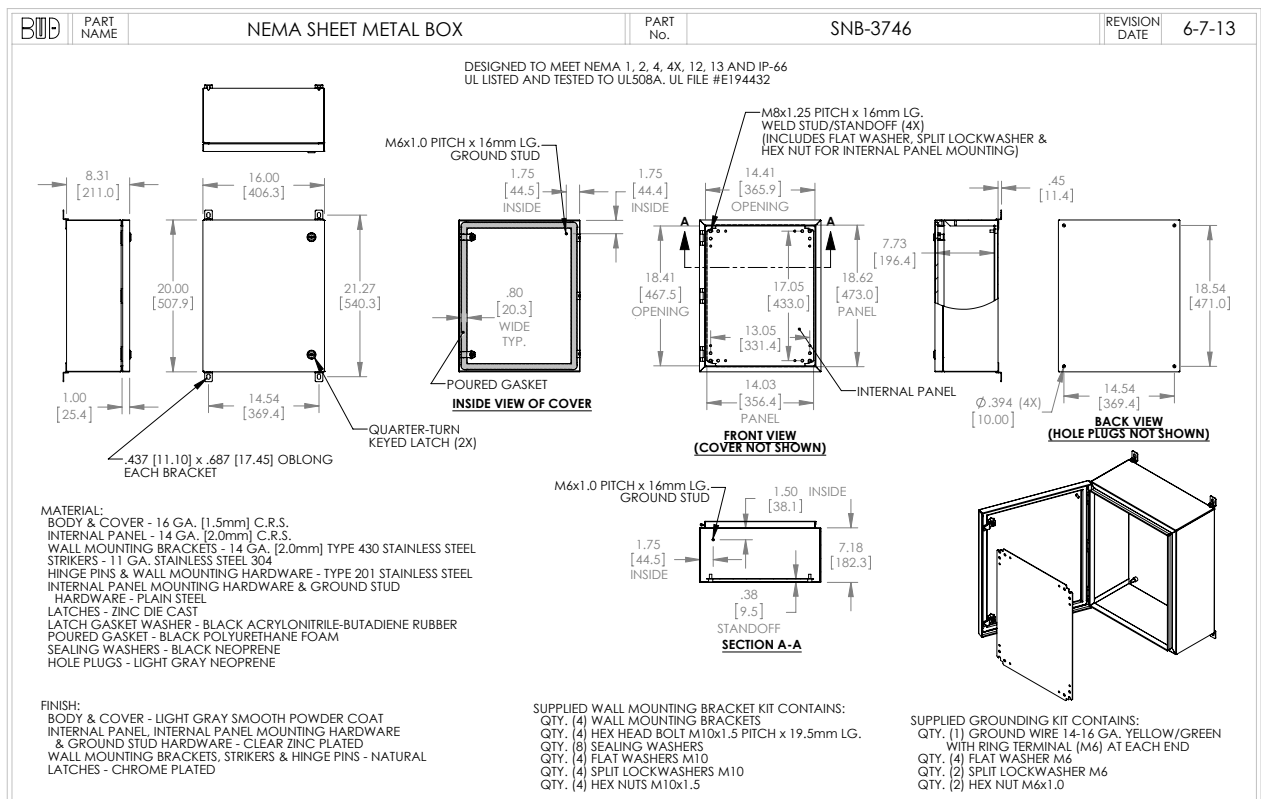
6.2.3. Enclosure Specifications

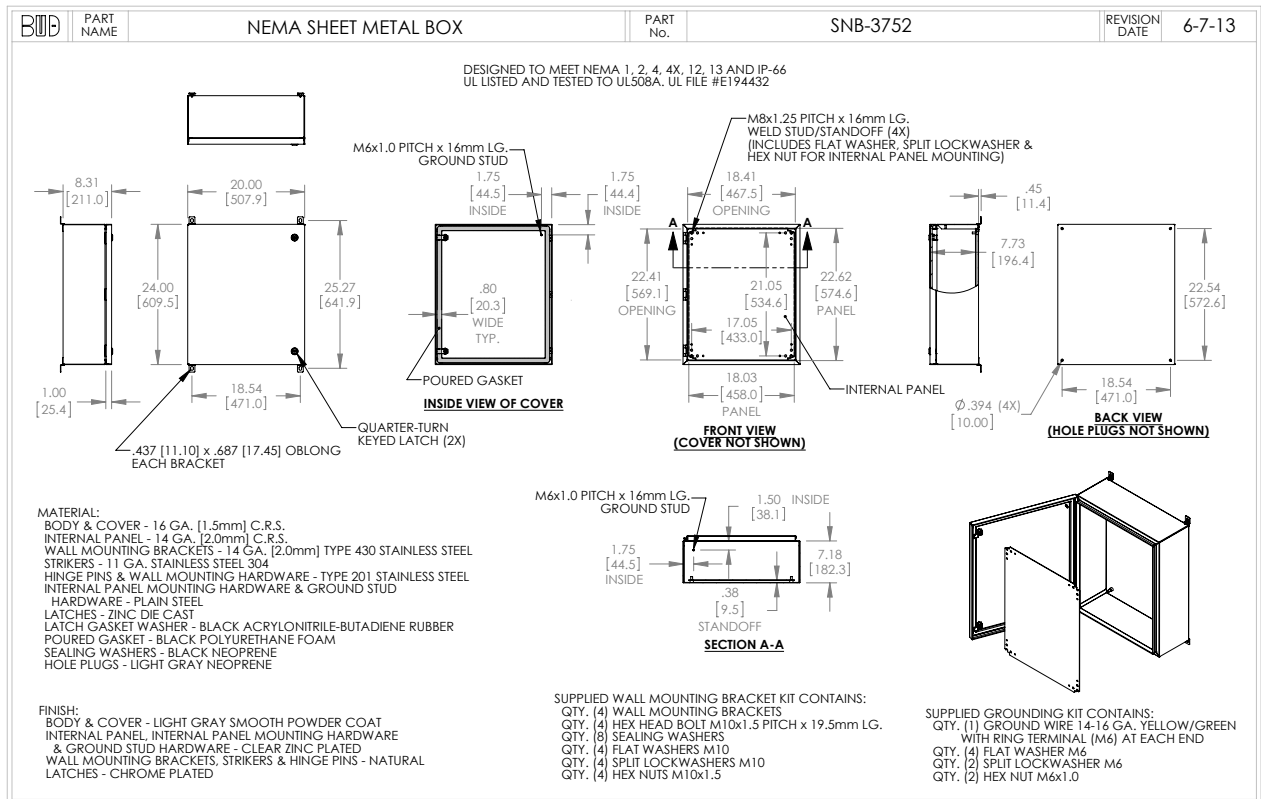
6.2.3.1. ESA System Enclosures



The specific enclosure used is determined by the space requirements of the requested product configuration.

Catalog Number	Dimensions (in. (mm))
SNB-3746	20.0 (508) x 16.0 (406) x 8.0 (203)
SNB-3752	24.0 (610) x 20.0 (508) x 8.0 (203)





Specifications:

- UL 508A Listed Type 1, 2, 4, 4X, 12, and 13 File No. E194432
- IP Rating: IP65 and IP66
- RoHS Compliant
- Powder Coated Steel



CLEANING THE ENCLOSURE

It is recommended to clean the exterior of the enclosure, as needed, to remove excess buildup of dust, debris, or other contamination. Ensure the enclosure door is shut while cleaning to prevent contact with internal components. Use a non-conductive, non-residue cleaner (e.g., 70% isopropyl alcohol & 30% water mixture) and a soft cloth that will not scratch the enclosure surface.

6.3. Power Requirements

6.3.1. AC Power Supply Requirements

Plant-supplied power source	120 V, 60 Hz AC or 240 V, 50 Hz
Circuit breaker	Internal 120 V, 5 A
Current draw under normal usage	Approximately 0.6 A

6.3.2. AC Power Specifications

Input Voltage Range	100 – 240VAC
Input Frequency Range	50 – 60Hz
Input Power Rating	150 W
Overvoltage Category	II; According to EN62368, EN61558, EN50178, EN60664-1, EN62477-1
Input Wire Connection Type	DIN, Screw-Down Terminal Block
Input Wire Size	26 – 10 AWG

6.4. Environmental Specifications

Storage Temperature	-40 °C to 85 °C (-40 °F to 185 °F)
Operating Temperature	-20 °C to 65 °C (-4 °F to 149 °F)
Storage Humidity	5% RH to 95% RH, non-condensing
Operating Humidity	10% RH to 90% RH, non-condensing
Maximum Altitude	2,000 m (6,500 ft)
Pollution Degree	2
Weight	15.88 – 27.22 kg (35 – 60 lbs.) depending on configuration
Indoor / Outdoor Use	Both

6.5. Product Certifications

Table 1. North America

Electromagnetic Compatibility (EMC)	Conforms to FCC 15.107 2026, Class A FCC 15.109 2026, Class A Certified to ICES-003 Issue 7 2020, Class A
Safety	Conforms to UL 508A and CSA C22.2 No. 286

Table 2. EU Directive Information – CE Compliance

Electromagnetic Compatibility (EMC) Directive 2014/30/EU	Tested to EN IEC 61326-1 2021, Class A
--	--

Table 3. UKCA

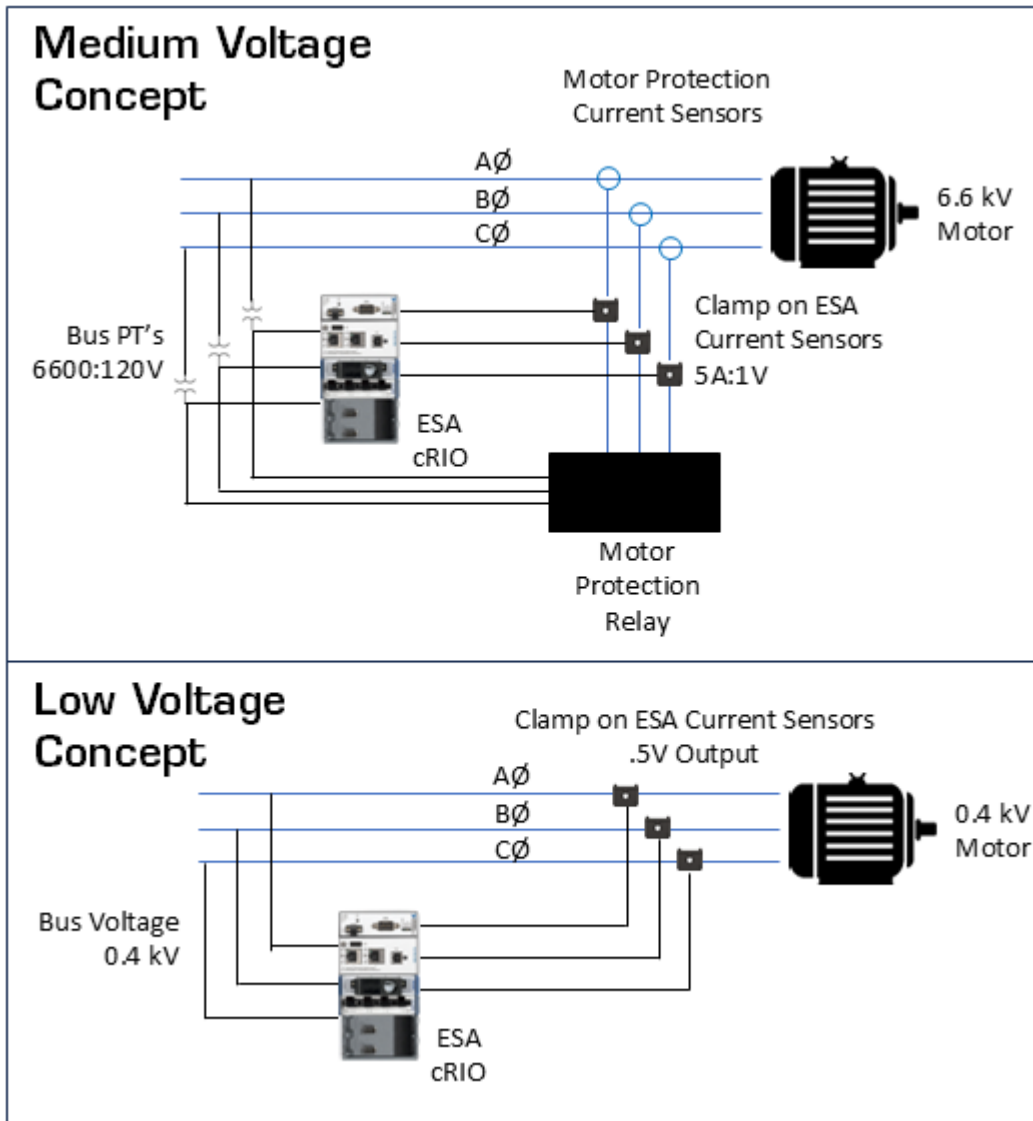
Electromagnetic Compatibility (EMC) 2016	Tested to EN 61326-1 2021, Class A
--	------------------------------------

WEEE Directive Statement

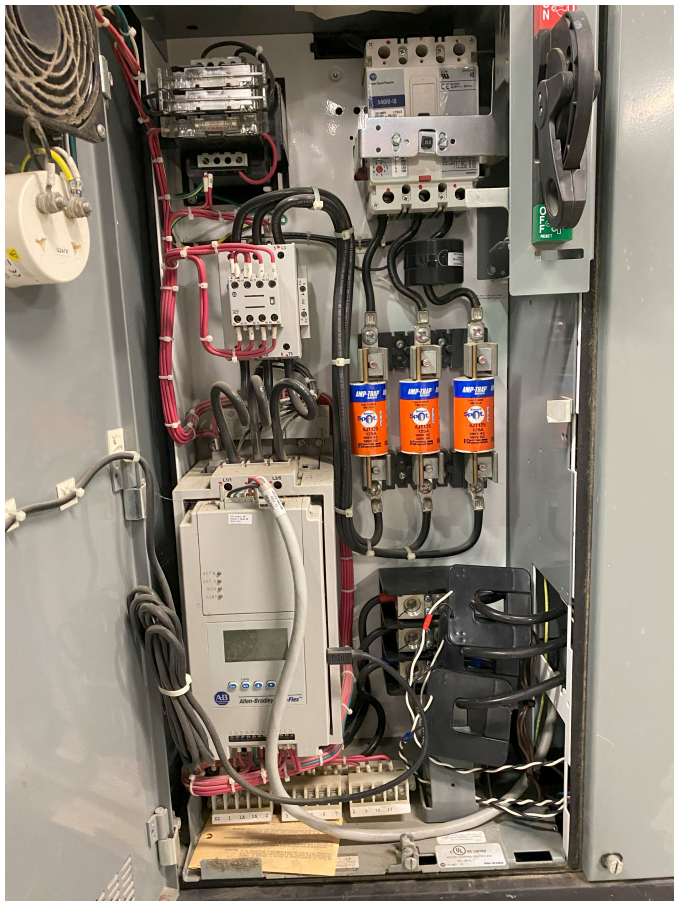
In accordance with Article 14 of Directive 2012/19/EU on Waste Electrical and Electronic Equipment (WEEE), the following marking requirements apply:

- The directive applies to electrical and electronic equipment falling under Annex I, Category 9 of Directive 2012/19/EU.
- Products must include markings that clearly identify the producer and indicate that the equipment was placed on the market after 13 August 2005.
- The crossed-out wheeled bin symbol signifies that the equipment must not be disposed of with unsorted municipal waste. End users are required to follow applicable local recycling and disposal procedures for electrical and electronic equipment.
- The marking affixed to the product confirms that it falls within the scope of this directive.

6.6. Instrumentation



6.6.1. Current Sensors



6.6.2. Potential Measurements

The ESA system potential (voltage) measurements can be made by paralleling to an existing bus PT (typical in medium voltage systems) or paralleling directly from the bus (low voltage system).

Medium voltage connection points may be made from the load side of the existing PT fuses, existing relay test switches, or relay voltage inputs.

Low voltage connection points may be directly connected to the bus, auxiliary connection points on an MCC breaker, or existing motor test points.

It is important to specify the line-to-line voltage magnitude and configuration (delta/wye) when ordering your ESA monitoring equipment so the appropriate input module can be included in your build.

6.7. Integration and Infrastructure

The Cutsforth ESA Monitoring System is designed to be integrated into InsightCM™ software. For more information on InsightCM™, including specific server requirements, visit the InsightCM™ README on the Cutsforth Support webpage at <https://support.cutsforth.com>.

The plant must provide a PC or Server for InsightCM™ meeting the requirements listed at the above link. Cutsforth is not responsible for the configuration of server-side deployment. Ensure the plant's InsightCM™ server is set up and ready for communication to field equipment in advance of system commissioning by Cutsforth.

7. Configuring InsightCM for ESA Assets

7.1. Motor Nameplate Information

ESA requires certain motor nameplate information to be input into InsightCM in order for the analysis and calculations to take place:

- Load
- Load Unit (HP or KW)
- Nominal Frequency (50 or 60 Hz)
- Synchronous speed (RPM)
- Full load speed (RPM)
- Rated volts (Volts)
- Full load amps (Amps)
- Service Factor
- Power Factor
- Full Load Efficiency

These are optional Nameplate/ESA Property fields:

- Efficiency at 75% Load
- Efficiency at 50% Load
- Efficiency at 25% Load
- Number of Stator Slots
- Number of Pump Vanes / Fan Blades
- Number of Rotor Bars

The data above can be found in a number of different locations:

- Motor Nameplates
- Spare Motor Nameplate
- Motor/Pump Manuals
- Previous Test Reports
- CBM/PdM Databases/Reports
- Relay/Protection Documents
- Etc.

7.2. Build Asset Tree in InsightCM

Refer to the InsightCM Setup and Configuration manual on the Cutsforth Support webpage at <https://support.cutsforth.com> for instructions regarding how to build the InsightCM asset tree.

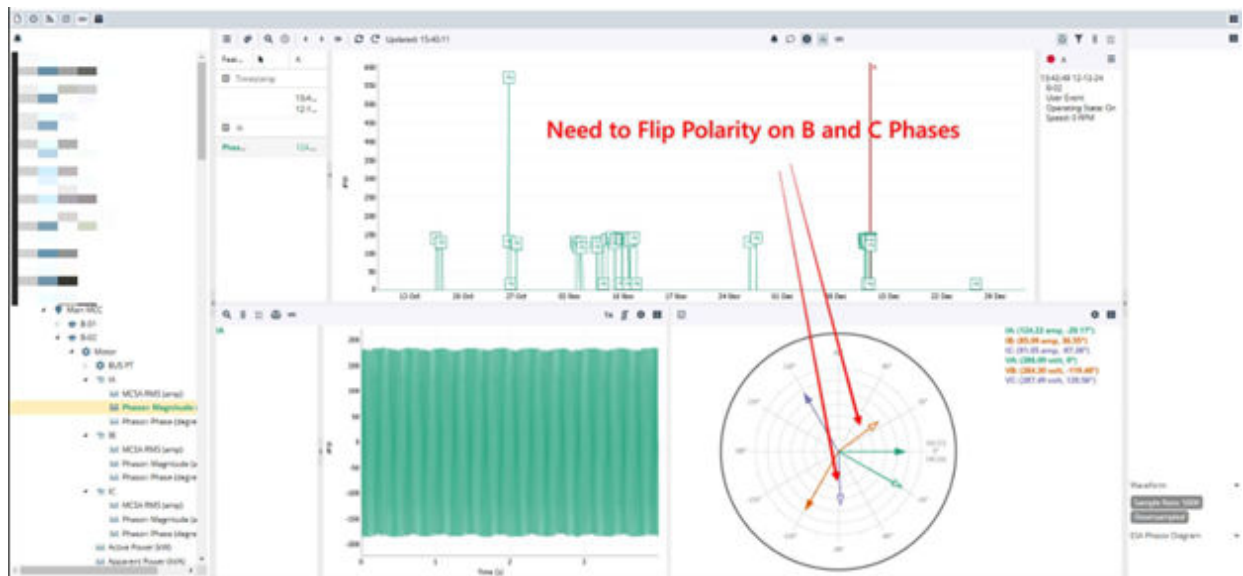
7.3. Configure Devices in InsightCM

Refer to the InsightCM Setup and Configuration manual on the Cutsforth Support webpage at <https://support.cutsforth.com> for instructions regarding how to configure devices in InsightCM.

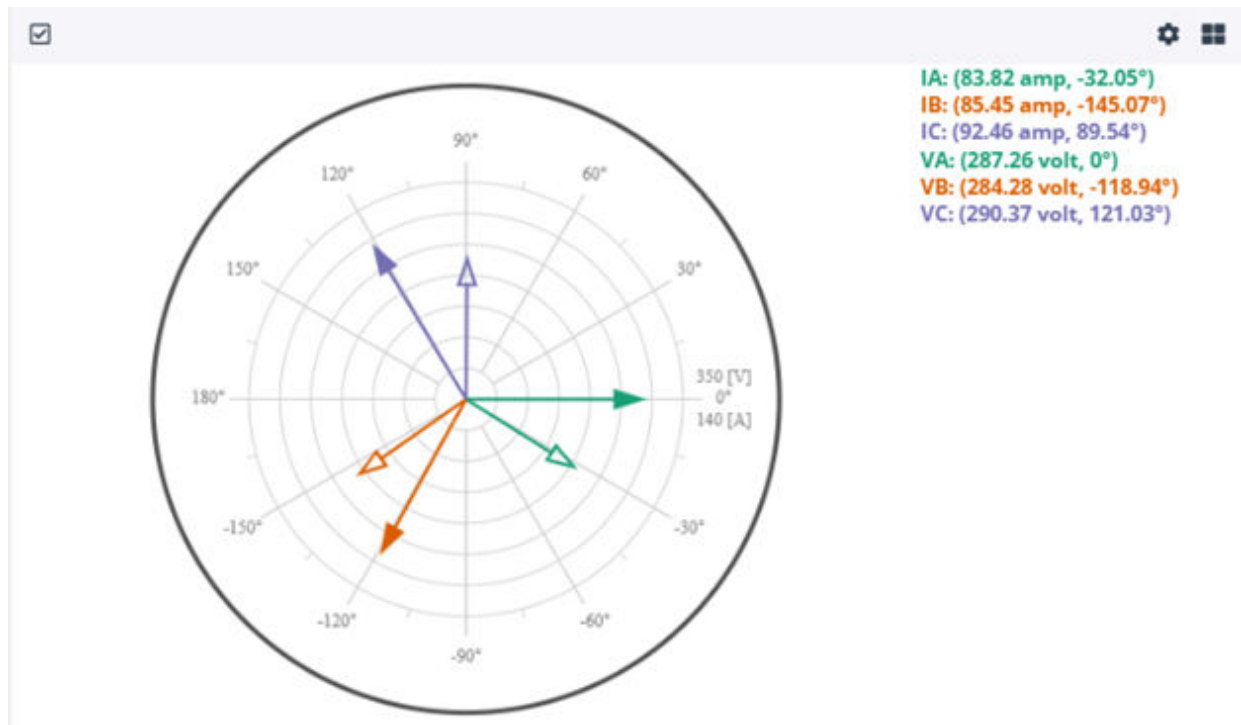
7.4. Commission Motors Using the Phasor Diagram

Use the phasor diagram to ensure that the three phases of current and voltage are in the proper relationship. With induction motors, current will lag voltage. Oftentimes during installation, phases are swapped or the polarity is flipped. Both of those conditions can be corrected in InsightCM without needing to go back into the field to make the change.

Below is an example of an installation where the current sensors were flipped in the field. Notice the B and C phasors are 180 degrees out of phase with their voltage phases. This can be corrected by checking the reverse polarity box in the asset configuration page and pushing the new configuration.



Below is the phasor diagram after the current polarity reversal. Notice each current phase lags its associated voltage phase:



8. Glossary

AWG	American Wire Gauge
CBM	Condition based maintenance
cRIO	NI Compact Reconfigurable I/O Controller.
current sensor	An instrument that senses the current flowing through a conductor and outputs a signal relative to the current being sensed to be input into a I/O device.
DC	Direct Current
ESA	Electrical Signature Analysis (ESA) is a permanently installed, non-intrusive, online monitoring system that uses three-phase voltage and current signals to detect potential faults and anomalies.
InsightCM™	InsightCM™ is application software for condition monitoring with full access to waveforms, multiple sensor technology inputs, enterprise software connectivity, and analytics packages.
I/O	input/output
LOTO	Lockout/Tagout
PdM	Predictive maintenance
potential transformer	A type of instrument transformer used in power systems to reduce high voltages to safer, lower levels for measurement and protection purposes.
RMS	Root Mean Square. A method of measuring the voltage or current of an AC waveform calculated by $X_{rms} = \sqrt{(1/n) * (\text{SUM}(X^n))}$, where X is the array of samples acquired and n is the number of samples acquired.
waveform	A variable that changes with time, usually representing a voltage or current. Waveforms are graphed with time on the horizontal axis.